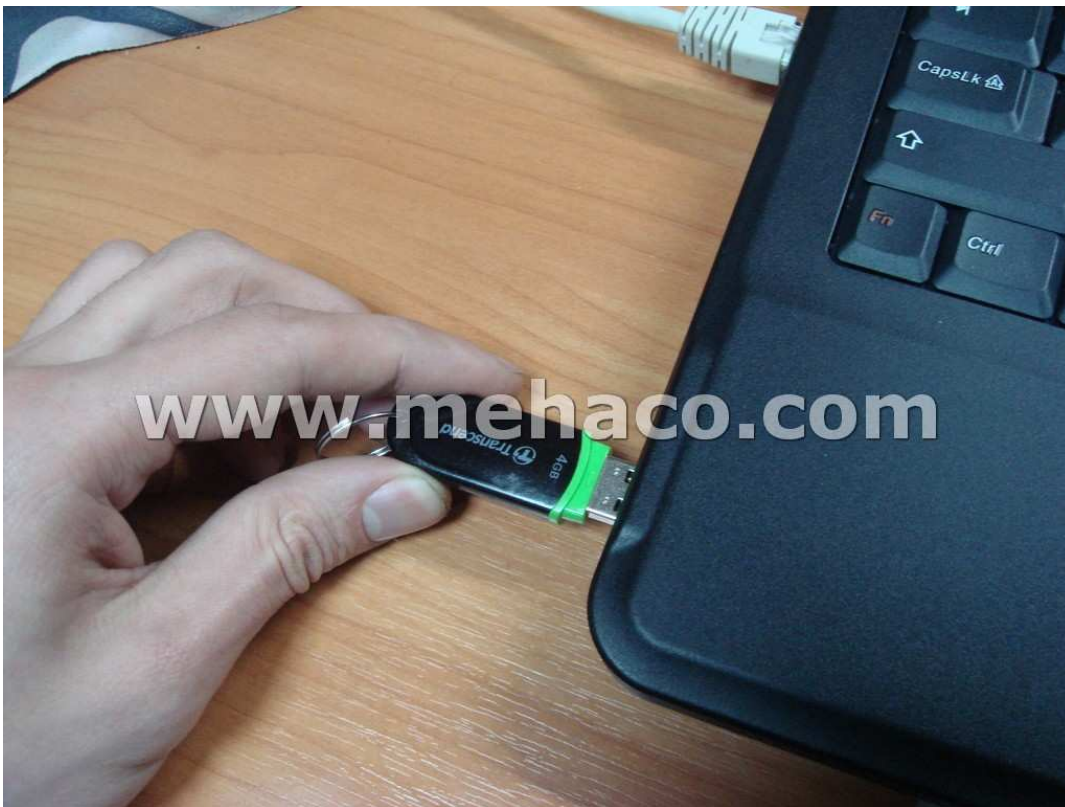




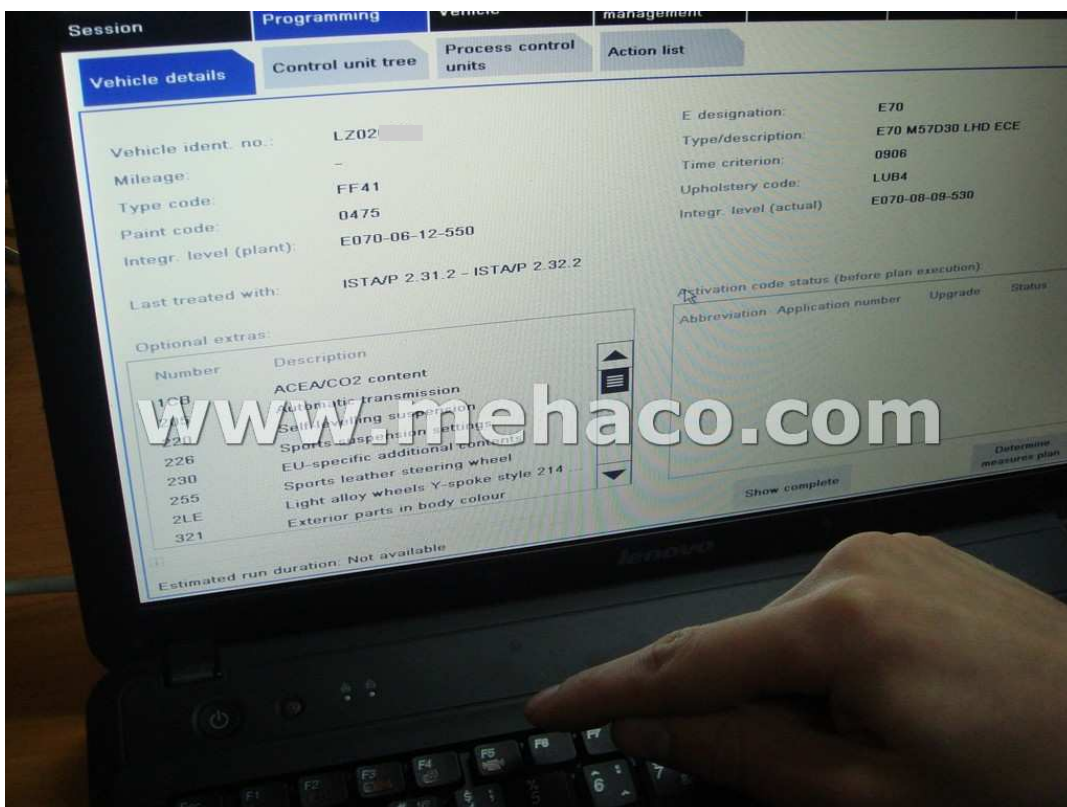
# Connect ICOM to car and start session:



Put USB Flash Drive to ISID:



And press special key to save vehicle order to USBS Flash Drive:



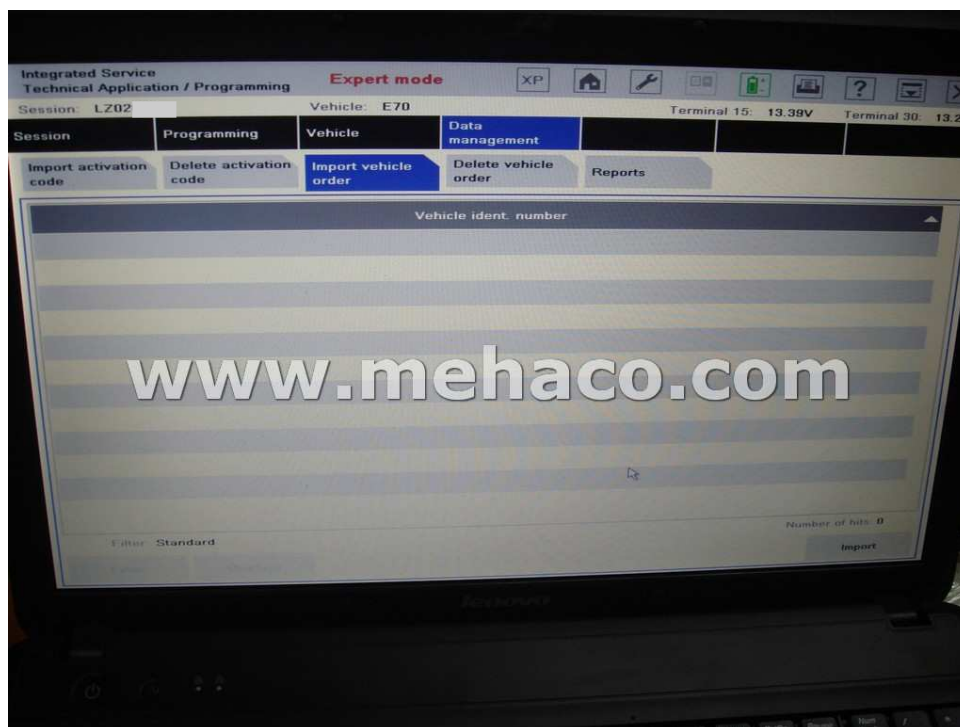
# Put USB Flash Drive to PC and change vehicle order in xml file (change language, equipment, options):

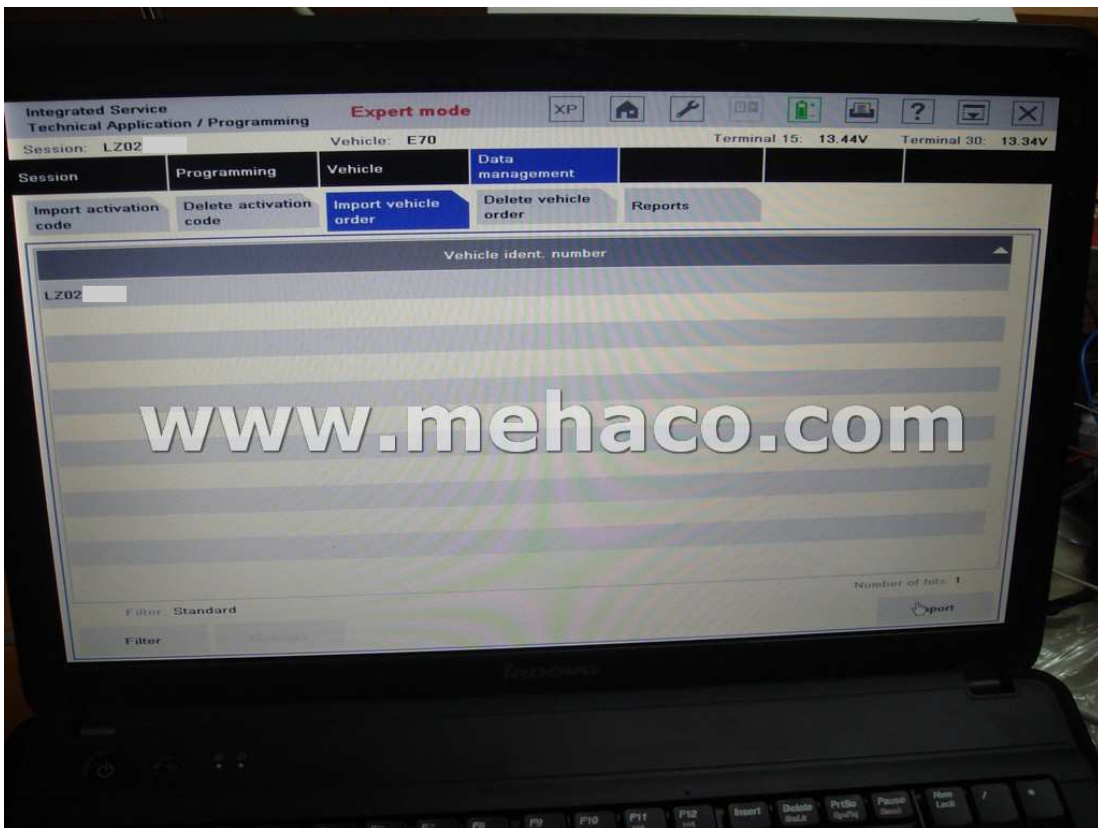
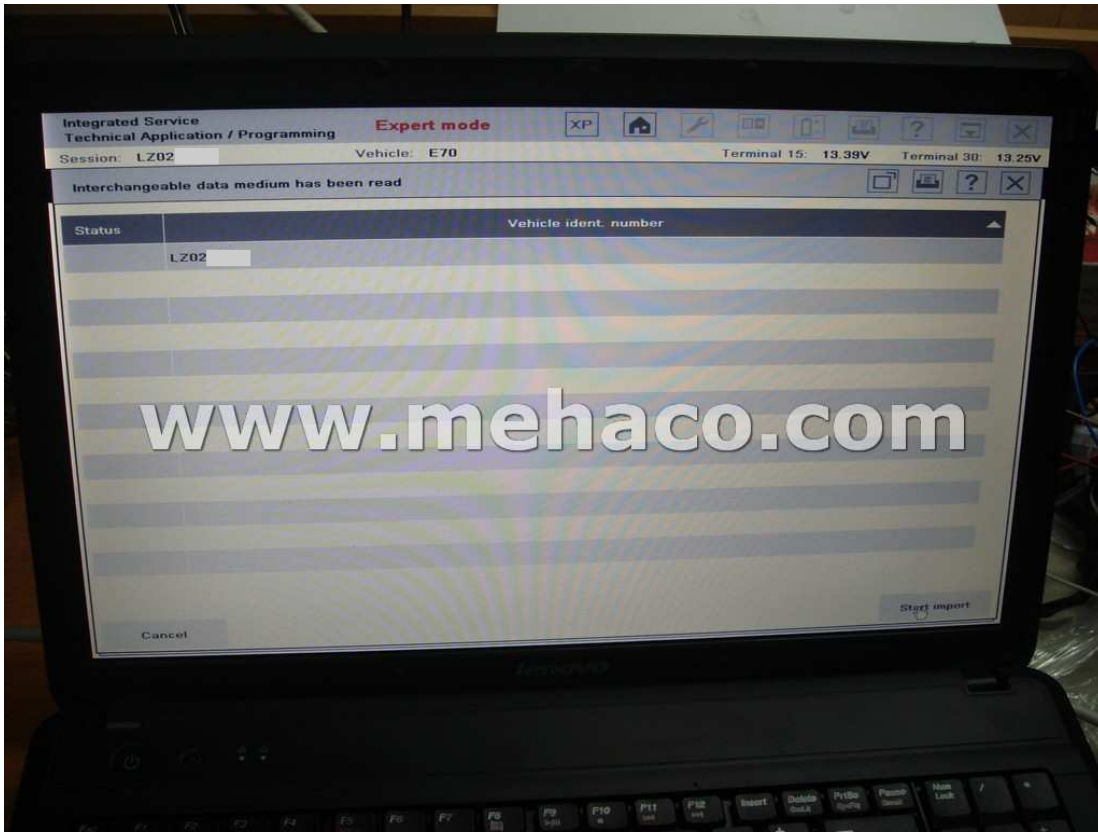


```
BMW Home Super D4 Upgrade
<coding vInLong="WBAFF410X0L202" checkDigit="P" location="1010" time="2011-02-03T16:07:54.000000" >
<checksumFsc/checksum>
<model type="FF41" buildVersion="0906">E70</model>
<partCode>047X</partCode>
<upholstery>LUB4</upholstery>
<options>
<option>108</option> <!-- ACEA / CO2 SCOPE -->
<option>205</option> <!-- AUTOMATIC TRANSMISSION -->
<option>220</option> <!-- SELF-LEVELLING SUSPENSION -->
<option>226</option> <!-- SPORTS SUSPENSION SETTINGS -->
<option>230</option> <!-- EXTRA PACKAGE, EU-SPECIFIC -->
<option>255</option> <!-- SPORTS LEATHER STEERING WHEEL -->
<option>2LE</option> <!-- BMW LA WHEEL 1-SPOKE 214 -->
<option>321</option> <!-- EXTERIOR PARTS IN VEHICLE COLOUR -->
<option>328</option> <!-- DOOR SILL -->
<option>330</option> <!-- SPORTS PACKAGE -->
<option>386</option> <!-- ROOF RAILING -->
<option>402</option> <!-- PARKING ASSISTANCE -->
<option>413</option> <!-- LUGGAGE COMPARTMENT NET -->
<option>423</option> <!-- FLOOR MATS, VELOURS -->
<option>428</option> <!-- WASHING TRIANGLE AND FIRST AID KIT -->
<option>431</option> <!-- INTERIOR/OUTSIDE MIRROR WITH AUTO DTP -->
<option>441</option> <!-- INTERIOR REAR-VIEW MIRROR WITH AUTO DTP -->
<option>454</option> <!-- SMOKER PACKAGE -->
<option>481</option> <!-- EL. FRONT SEAT ADJUSTMENT W. MEMORY -->
<option>493</option> <!-- SPORTS SEAT -->
<option>494</option> <!-- STORAGE COMPARTMENT PACKAGE -->
<option>496</option> <!-- SEAT HEATING DRIVER/PASSENGER -->
<option>498</option> <!-- SEAT HEATING REAR -->
<option>499</option> <!-- SEAT TRIM -->
<option>501</option> <!-- RAIN LIGHT CLEANING SYSTEM -->
<option>502</option> <!-- RAIN DISTANCE CONTROL (PDC) -->
<option>503</option> <!-- XENON LIGHT -->
<option>504</option> <!-- INDIVIDUAL EQUIPMENT -->
<option>505</option> <!-- KILOMETRE SPEEDO -->
<option>506</option> <!-- MAKE-UP MIRROR ILLUMINATED -->
<option>507</option> <!-- TV FUNCTION -->
<option>508</option> <!-- NAVIGATION SYSTEM, PROFESSIONAL -->
<option>509</option> <!-- HEAD-UP DISPLAY -->
<option>510</option> <!-- BMW ASSIST -->
<option>511</option> <!-- BMW ONLINE -->
<option>512</option> <!-- VOICE CONTROL -->
<option>513</option> <!-- PREP., TELEPHONE SIEMENS HANDSET, FRONT -->
<option>514</option> <!-- CD CHANGER FOR 6 CDS -->
<option>515</option> <!-- HIFI SYSTEM PROFESSIONAL DSP -->
<option>516</option> <!-- AREA-CODE 2 FOR DVD -->
<option>517</option> <!-- HIGH CLOSURE SHADO -->
<option>518</option> <!-- HEADLINING ANTHRACITE -->
<option>519</option> <!-- NATIONAL VERSION GERMANY/AUSTRIA -->
<option>520</option> <!-- BATTERY MASTER SWITCH -->
<option>521</option> <!-- HIGH SPEED SYNCHRONISATION -->
<option>522</option> <!-- LANGUAGE VERSION GERMAN -->
<option>523</option> <!-- DEALER LIST EUROPE -->
<option>524</option> <!-- OPERATING INSTRUCTIONS GERMAN -->
<option>525</option> <!-- DISPATCH PROTECTION PACK -->
<option>526</option> <!-- JOB CONTROL "HEA" -->
</options>
</model>
</coding>
</order>
</vehicleorder>
```

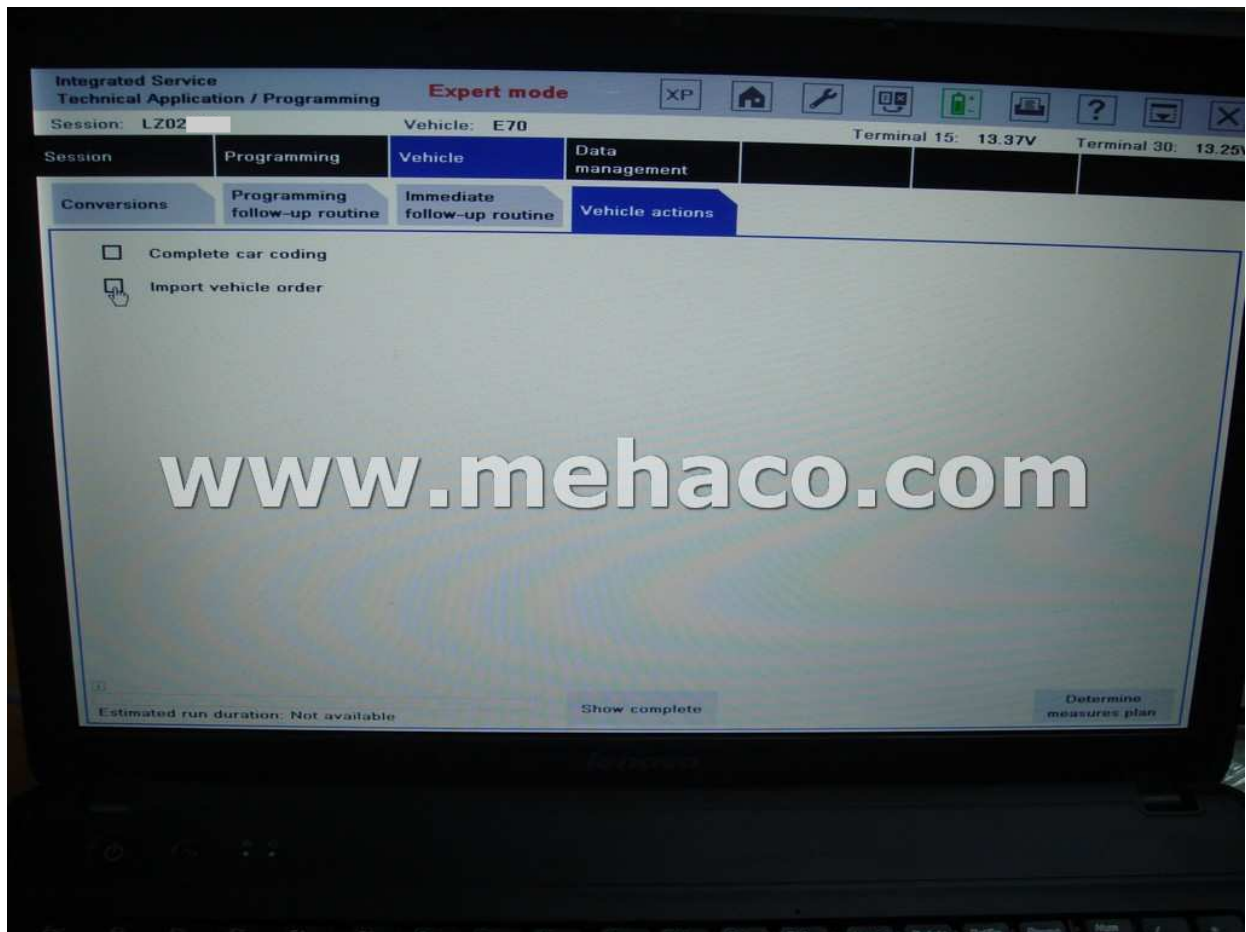
```
<option>544</option> <!-- INDIVIDUAL EQUIPMENT -->
<option>548</option> <!-- KILOMETRE SPEEDO -->
<option>563</option> <!-- MAKE-UP MIRROR ILLUMINATED -->
<option>601</option> <!-- TV FUNCTION -->
<option>609</option> <!-- NAVIGATION SYSTEM, PROFESSIONAL -->
<option>610</option> <!-- HEAD-UP DISPLAY -->
<option>612</option> <!-- BMW ASSIST -->
<option>616</option> <!-- BMW ONLINE -->
<option>620</option> <!-- VOICE CONTROL -->
<option>633</option> <!-- PREP., TELEPHONE SIEMENS HANDSET,
CD CHANGER FOR 6 CDS -->
<option>672</option> <!-- HIFI SYSTEM PROFESSIONAL DSP -->
<option>677</option> <!-- AREA-CODE 2 FOR DVD -->
<option>698</option> <!-- HIGH CLOSURE SHADO -->
<option>760</option> <!-- HEADLINING ANTHRACITE -->
<option>761</option> <!-- NATIONAL VERSION GERMANY/AUSTRIA -->
<option>762</option> <!-- BATTERY MASTER SWITCH -->
<option>763</option> <!-- HIGH SPEED SYNCHRONISATION -->
<option>764</option> <!-- LANGUAGE VERSION GERMAN -->
<option>765</option> <!-- DEALER LIST EUROPE -->
<option>766</option> <!-- OPERATING INSTRUCTIONS GERMAN -->
<option>767</option> <!-- DISPATCH PROTECTION PACK -->
<option>768</option> <!-- JOB CONTROL "HEA" -->
</options>
</model>
</coding>
</order>
</vehicleorder>
```

Put USB Flash drive with change vehicle order to ISID and select import xml file in ISSS software menu:





## Change vehicle order in car:



After select change vehicle order in car ISSS prompt code for accept with operation

